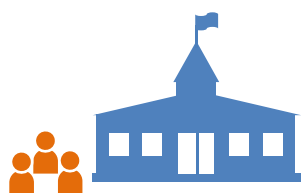


826,425
participants*

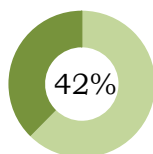
Enhancing access to quality healthcare, particularly primary and preventive care, by improving the supply and distribution of healthcare professionals through community/academic educational partnerships.

Pipeline programs expose students to health careers and develop intent to pursue post-secondary education in primary healthcare professions.

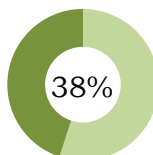


376,333
grades 9-16 participants
(many thousands more participated at the K-8 level)

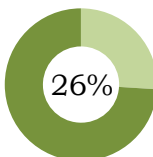
95,785
curriculum-based pipeline program participants



from disadvantaged backgrounds



from rural backgrounds



underrepresented minorities

Clinical training

improves readiness, willingness, and ability of health professions trainees to serve in primary care, and rural and underserved community settings.

facilitated
38,135
rotations

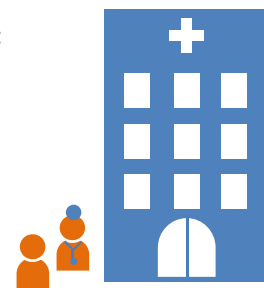
32,516

health professions students placed in rural and underserved locations

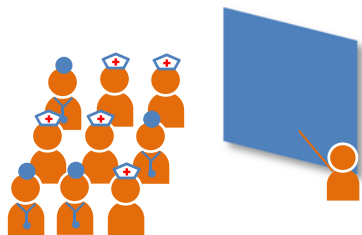
- 17,701 medical students
- 14,815 associated health professions students

Training sites

- used include:
- 4,420 primary care setting
 - 5,584 located in a medically underserved community
 - 3,245 located in a rural area

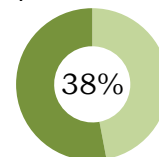


Continuing education programs address key issues in health professional shortage areas by providing health professionals with access to resources that support practice, reduce professional isolation, disseminate best practices, and improve quality of healthcare for medically underserved communities and health disparities populations.



400,631

continuing education participants



employed in medically underserved communities